

Safety Summary

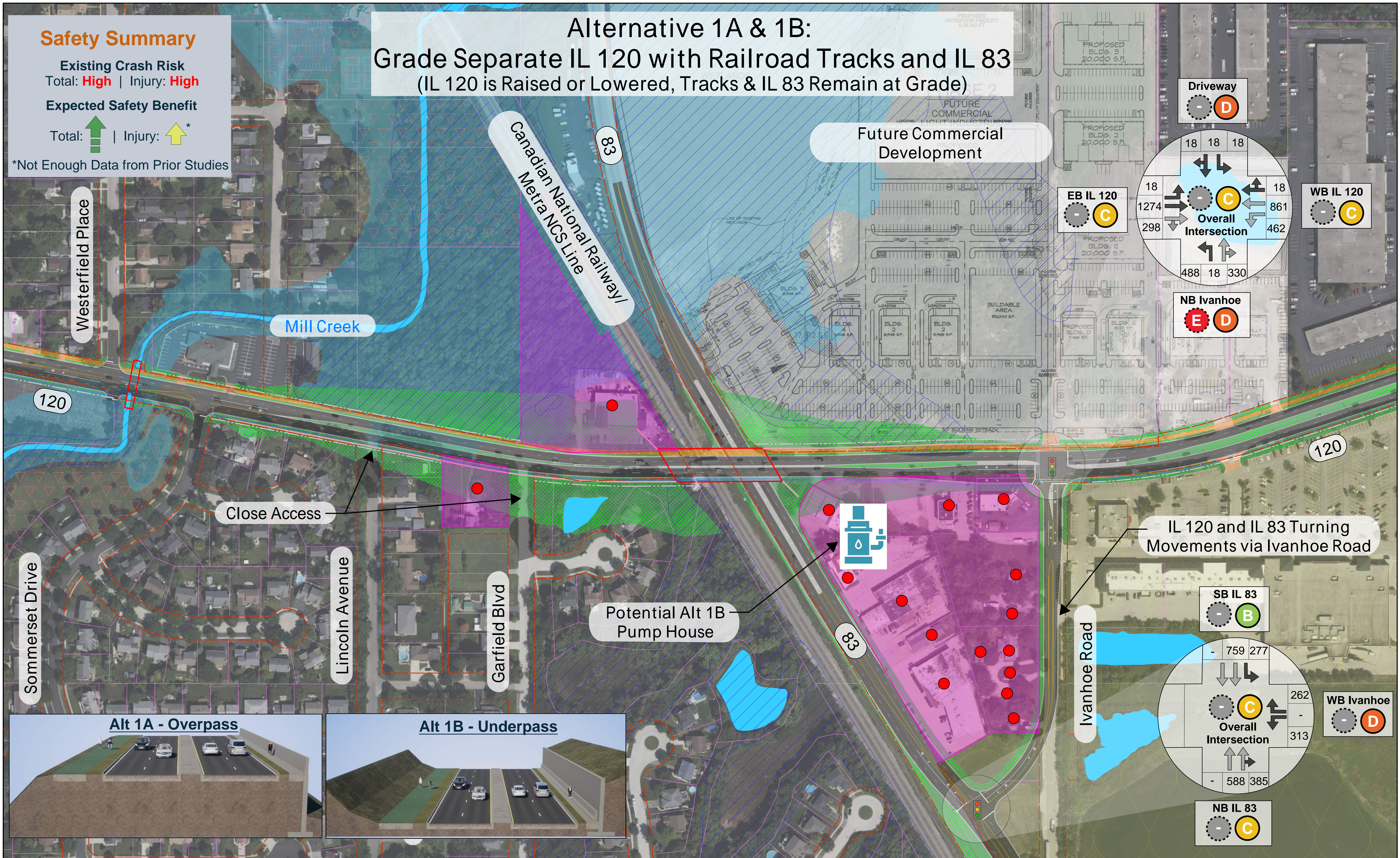
Existing Crash Risk
Total: **High** | Injury: **High**

Expected Safety Benefit

Total: **↑** | Injury: **↑***

*Not Enough Data from Prior Studies

Alternative 1A & 1B: Grade Separate IL 120 with Railroad Tracks and IL 83 (IL 120 is Raised or Lowered, Tracks & IL 83 Remain at Grade)



Notes:

1. Traffic Volumes Shown are Build (2050) Counts
2. See Roll Plots for Legend

3. Driveway Counts at the Future Commercial Development are assumed based on Proposed Parking.