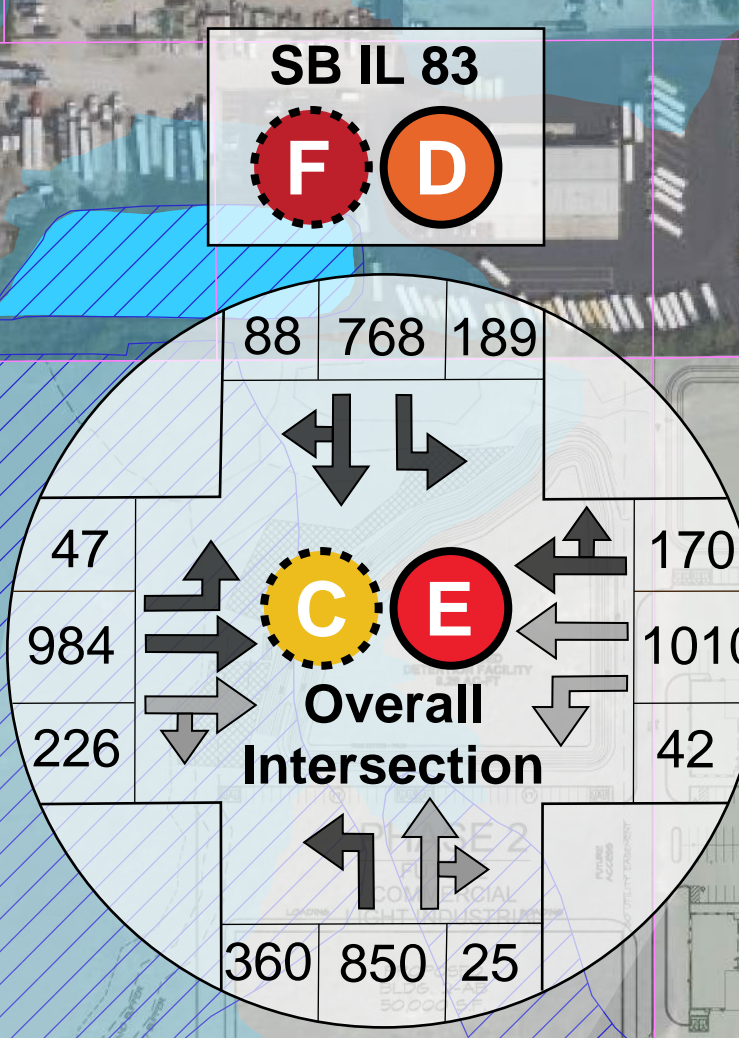
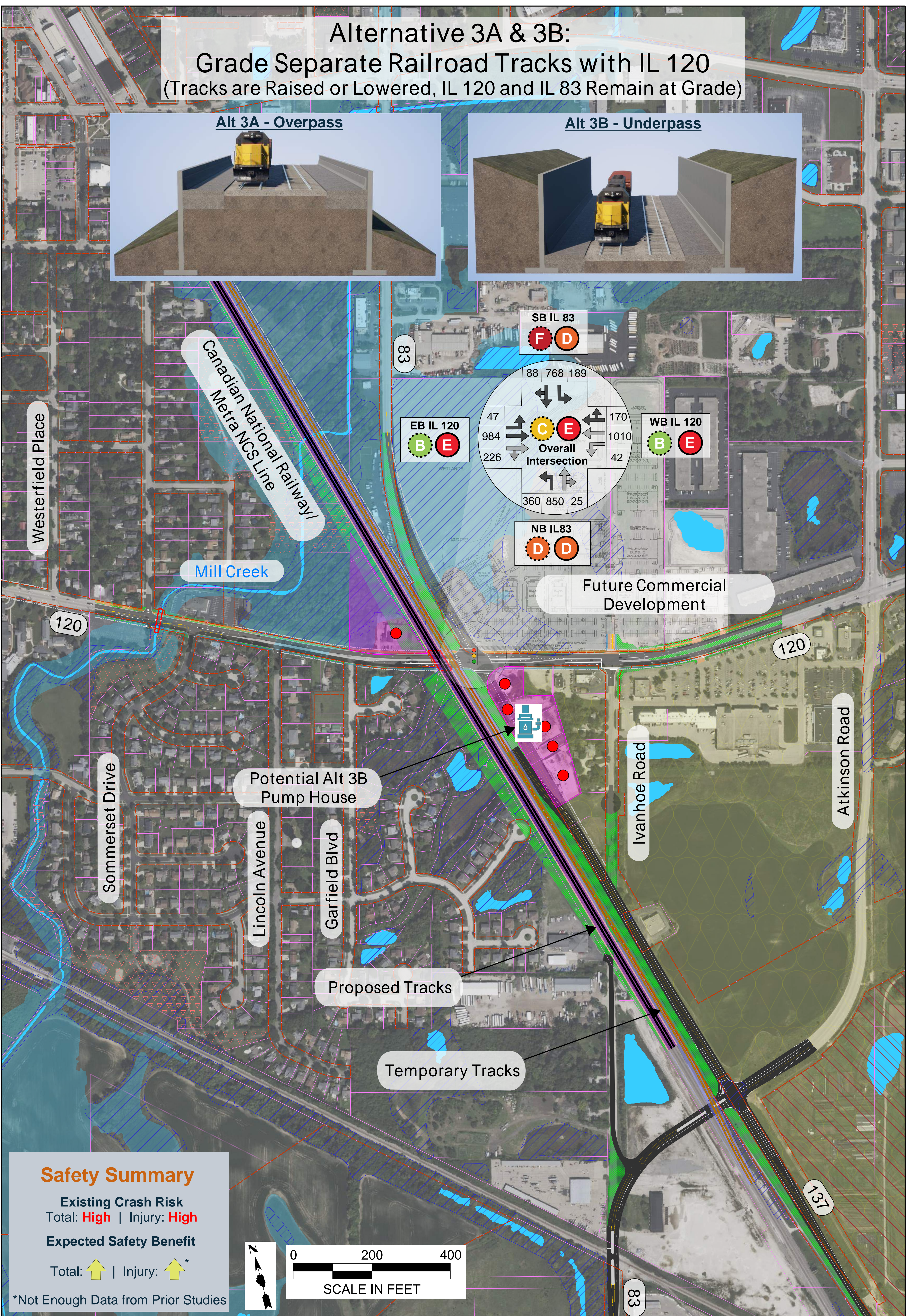


# Alternative 3A & 3B: Grade Separate Railroad Tracks with IL 120 (Tracks are Raised or Lowered, IL 120 and IL 83 Remain at Grade)

**Alt 3A - Overpass**



**Alt 3B - Underpass**



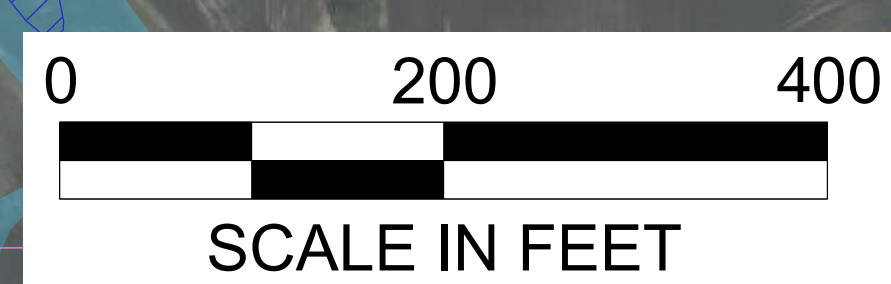
## Safety Summary

Existing Crash Risk  
Total: **High** | Injury: **High**

Expected Safety Benefit

Total: **↑** | Injury: **↑\***

\*Not Enough Data from Prior Studies



## Notes:

1. Traffic Volumes Shown are Build (2050) Counts
2. Tracks Shown are for Overpass, Underpass Extends 900 Feet Further Each Direction.
3. See Roll Plots for Legend